

# CI Munro Global Growth Equity Fund

Series FH USD Hedged



AS AT MARCH 31, 2024

## FUND OVERVIEW

The fund seeks to maximize long-term capital appreciation primarily through exposure to a portfolio of growth-oriented equities issued by companies located anywhere in the world

## FUND DETAILS

Inception date	January 2021
CAD Total net assets (\$CAD) As at 2024-03-28	\$783.2 million
NAVPS	\$12.5818
MER (%) As at 2023-09-30	1.15
Management fee (%)	0.90
Asset class	Global Equity
Currency	USD Hedged
Minimum investment	\$500 initial/\$25 additional
Distribution frequency	Annually
Last distribution	\$0.8734

## Risk rating<sup>1</sup>

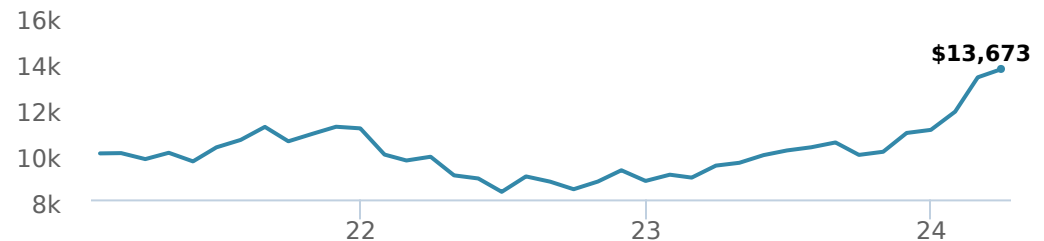


## FUND CODES

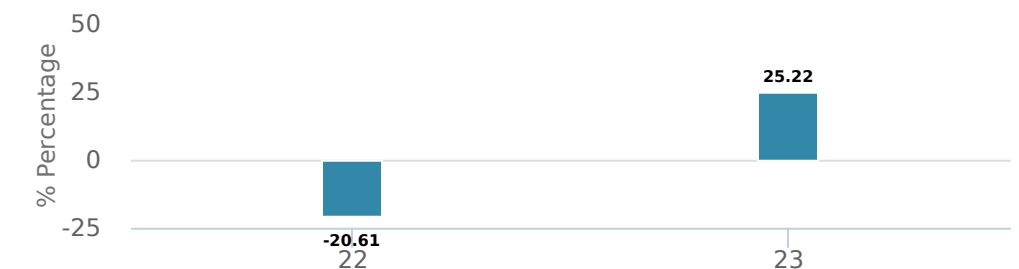
FH	4199
AH	2199
IH	5199
PH	90199

## PERFORMANCE<sup>2</sup>

### Growth of \$10,000 (since inception date)



### Calendar year performance



### Average annual compound returns

	YTD	1 Mo	3 Mo	6 Mo	1 Y	3 Y	5 Y	10 Y	Inception*
	24.04%	2.74%	24.04%	37.62%	44.39%	11.92%	-	-	10.21%

\*Since inception date

## DISTRIBUTION HISTORY<sup>3</sup>

Payable date	Total
2021-12-17	0.8734

## MANAGEMENT TEAM

# MUNRO

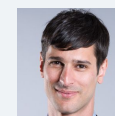
Munro Partners is a global absolute return manager focused on identifying growth equities primed to benefit from structural and thematic changes in our world today. Munro Partners is a sub-advisor to CI Investments Inc.



Nick Griffin



Kieran Moore



James Tsinidis



Jeremy Gibson

# CI Munro Global Growth Equity Fund

Series FH USD Hedged



AS AT MARCH 31, 2024

## PORTFOLIO ALLOCATIONS<sup>4</sup>

Asset allocation	(%)	Sector allocation	(%)	Geographic allocation	(%)
US Equity	75.92	Technology	61.17	United States	76.04
International Equity	22.86	Consumer Services	10.10	Netherlands	5.57
Cash and Equivalents	1.21	Healthcare	6.81	Taiwan	4.46
Other	0.01	Financial Services	6.61	Germany	3.05
		Consumer Goods	6.38	Korea, Republic Of	2.53
		Telecommunications	2.43	Denmark	2.45
		Industrial Services	2.31	United Kingdom	2.33
		Industrial Goods	1.97	Switzerland	1.50
		Cash and Cash Equivalent	1.21	Other	1.07
		Other	1.01	Ireland	1.00

## TOP HOLDINGS

	Sector	(%)
1. NVIDIA Corp	Computer Electronics	10.41%
2. Amazon.com Inc	Retail	7.48%
3. Microsoft Corp	Information Technology	6.95%
4. Constellation Energy Corp	Diversified Technology	4.78%
5. Meta Platforms Inc CI A	Information Technology	4.71%
6. Taiwan Semiconductor Manufactrg Co Ltd - ADR	Computer Electronics	4.46%
7. ServiceNow Inc	Information Technology	4.15%
8. Visa Inc CI A	Diversified Financial Services	3.84%
9. Synopsys Inc	Information Technology	3.50%
10. Rheinmetall AG	Automotive	3.05%
11. ASML Holding NV	Computer Electronics	2.79%
12. Mastercard Inc CI A	Diversified Financial Services	2.77%
13. Uber Technologies Inc	Information Technology	2.66%
14. Chipotle Mexican Grill Inc	Leisure	2.62%
15. SK Hynix Inc	Computer Electronics	2.53%

Note: This page is not complete without disclaimers on the next page.

**Over 35,000 financial advisors have chosen CI Global Asset Management as a partner. We believe that Canadians have the best opportunity for investments success by using the services of a professional financial advisor. [Learn more at ci.com.](#)**

<sup>1</sup> The risk level of a fund has been determined in accordance with a standardized risk classification methodology in National Instrument 81-102, that is based on the fund's historical volatility as measured by the 10-year standard deviation of the fund's returns. Where a fund has offered securities to the public for less than 10 years, the standardized methodology requires that the standard deviation of a reference mutual fund or index that reasonably approximates the fund's standard deviation be used to determine the fund's risk rating. Please note that historical performance may not be indicative of future returns and a fund's historical volatility may not be indicative of future volatility.

<sup>2</sup> Commissions, trailing commissions, management fees and expenses all may be associated with mutual fund investments. Please read the prospectus before investing. The indicated rates of return are the historical annual compounded total returns net of fees and expenses payable by the fund (except for figures of one year or less, which are simple total returns) including changes in security value and reinvestment of all dividends/distributions and do not take into account sales, redemption, distribution or optional charges or income taxes payable by any securityholder that would have reduced returns. Mutual funds are not guaranteed, their values change frequently, and past performance may not be repeated.

<sup>3</sup> Please refer to the fund's simplified prospectus for distribution information.

<sup>4</sup> Portfolio allocations will fluctuate over the life of the mutual fund as the portfolio holdings and market value of each security changes. The portfolio manager(s) may change the portfolio allocations in some or all of the sectors.

The contents are not to be used or construed as investment advice or as an endorsement or recommendation of any entity of security discussed.

Certain statements contained in this communication are based in whole or in part on information provided by third parties and CI has taken reasonable steps to ensure their accuracy.

The rates of return are used only to illustrate the effects of the compound growth rate and are not intended to reflect future values or returns on investment in an investment fund.

The "Growth of \$10,000 invested" chart shows the final value of a hypothetical \$10,000 investment in securities in this class/series of the fund as at the end of the investment period indicated and is not intended to reflect future values or returns on investment in such securities.

Management Expense Ratio ("MER") represents the trailing 12-month management expense ratio, which reflects the cost of running the fund, inclusive of applicable taxes including HST, GST and QST (excluding commissions and other portfolio transaction costs) as a percentage of daily average net asset value the period, including the fund's proportionate share of any underlying fund(s) expenses, if applicable. The MER is reported in each fund's Management Report of Fund Performance ("MRFP"). MRFPs can be found within the Documents tab on ci.com.

CI Global Asset Management is a registered business name of CI Investments Inc.

©CI Investments Inc. 2024. All rights reserved.

Published April 2024