

Select 20i80e Managed Portfolio Corporate Class

Class O USD



AS AT OCTOBER 31, 2020

FUND OVERVIEW

This fund invests 20% of its assets in mutual funds that invest primarily in income securities and 80% of its assets in mutual funds that invest primarily in equity securities.

FUND DETAILS

Inception date	July 2011
Total net assets (\$CAD) As at 2020-10-31	\$188.2 million
NAVPS	\$12.5969
MER (%) As at 2020-03-31	0.16
Management fee (%)	Negotiable
Asset class	Asset Allocation
Currency	USD
Minimum investment	\$100,000 initial / \$5,000 additional
Distribution frequency	Quarterly
Last distribution	\$0.0513

Risk rating²

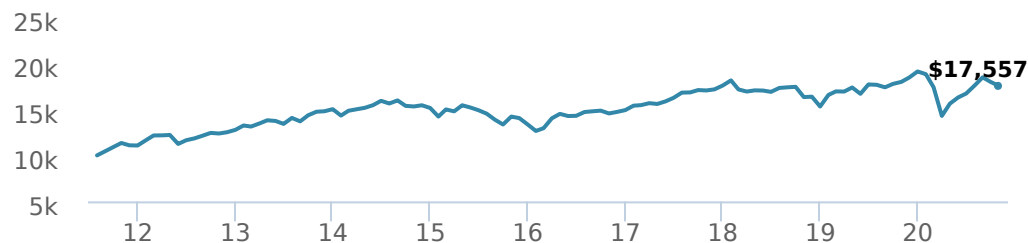


FUND CODES

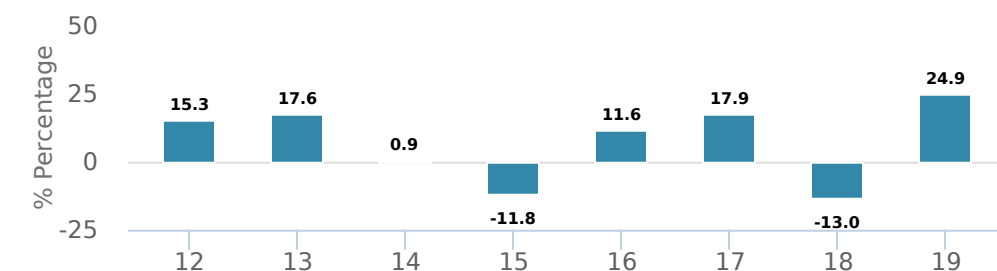
O	19111
E	17111

PERFORMANCE¹

Growth of \$10,000 (since inception date)



Calendar year performance



Average annual compound returns

YTD	1 Mo	3 Mo	6 Mo	1 Y	3 Y	5 Y	10 Y	Inception*
-8.2%	-2.4%	-0.1%	12.4%	-2.4%	1.0%	4.3%	-	6.3%

*Since inception date

DISTRIBUTION HISTORY³

Payable date	Total	Payable date	Total
2020-09-25	0.0513	2019-06-21	0.1474
2020-06-26	0.0443	2019-03-22	0.2280
2020-03-20	0.0853	2018-12-14	0.0690
2019-12-13	0.1529	2018-09-14	0.0692
2019-09-27	0.1503	2018-06-22	0.0669

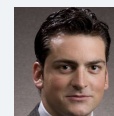
MANAGEMENT TEAM



CI Multi-Asset Management, led by portfolio manager Alfred Lam, oversees CI's managed solutions. The team's philosophy is centred on delivering predictable outcomes for investors by utilizing a full set of asset classes while adding value and managing risk through multiple factors. CI Multi Asset Management is a division of CI Investments Inc, a subsidiary of CI Financial Corp.



Alfred Lam



Marchello Holditch

Select 20i80e Managed Portfolio Corporate Class

Class O USD



AS AT OCTOBER 31, 2020

PORTFOLIO ALLOCATIONS⁵

Asset allocation	(%)	Sector allocation	(%)	Geographic allocation	(%)
International Equity	32.09%	Other	23.44%	Canada	35.84%
Canadian Equity	28.56%	Financial Services	14.96%	United States	28.91%
US Equity	24.20%	Technology	12.67%	Other	13.39%
Cash and Equivalents	4.87%	Consumer Services	8.10%	Multi-National	8.08%
Foreign Government Bonds	2.76%	Mutual Fund	8.09%	United Kingdom	3.38%
Canadian Corporate Bonds	2.24%	Fixed Income	7.91%	France	2.28%
Canadian Government Bonds	1.54%	Industrial Services	6.80%	Japan	2.28%
Commodities	1.39%	Healthcare	6.51%	Cayman Islands	2.25%
Foreign Corporate Bonds	1.25%	Basic Materials	6.06%	Netherlands	2.02%
Other	1.10%	Consumer Goods	5.46%	Germany	1.57%

UNDERLYING FUND ALLOCATIONS

	Sector	(%)
1. Select Canadian Equity Managed Fund Class I	Mutual Fund	27.29%
2. Select International Equity Managed Fund Class I	Mutual Fund	24.73%
3. Select U.S. Equity Managed Fund Class I	Mutual Fund	22.25%
4. CI Income Fund Class A	Mutual Fund	9.65%
5. CI Munro Global Growth Equity Fund Class I	Mutual Fund	8.04%
6. Sentry Precious Metals Fund Series I	Mutual Fund	3.16%
7. SPDR Gold Trust ETF (GLD)	Exchange Traded Fund	1.08%
8. iShares 20+ Year Treasury Bond ETF (TLT)	Fixed Income	1.03%
9. iShares S&P/TSX Global Gold Index ETF (XGD)	Exchange Traded Fund	1.01%
10. iShares Barclays TIPS Bond ETF (TIP)	Fixed Income	0.51%

TOP HOLDINGS

	Sector	(%)
1. CI First Asset MStar Canada Moment Indx ETF (WXM)	Exchange Traded Fund	3.88%
2. iShares Core S&P/TSX Capped Composit Idx ETF (XIC)	Exchange Traded Fund	3.07%
3. Microsoft Corp	Computer Electronics	1.90%
4. Amazon.com Inc	Retail	1.41%
5. Gold Bullion	Other	1.08%
6. Alphabet Inc Cl A	Information Technology	0.99%
7. Facebook Inc Cl A	Information Technology	0.94%
8. Royal Bank of Canada	Banking	0.93%
9. Visa Inc Cl A	Specialty Finance	0.92%
10. Alibaba Group Holding Ltd - ADR	Information Technology	0.86%
11. MasterCard Inc	Diversified Financial Services	0.82%
12. Apple Inc	Diversified Technology	0.76%
13. Tencent Holdings Ltd	Information Technology	0.71%
14. Brookfield Asset Management Inc Cl A	Diversified Financial Services	0.63%
15. Alphabet Inc Cl C	Information Technology	0.61%

Note: This page is not complete without disclaimers on the next page.

Over 35,000 financial advisors have chosen CI Global Asset Management as a partner. We believe that Canadians have the best opportunity for investments success by using the services of a professional financial advisor. [Learn more at ci.com.](#)

¹ Commissions, trailing commissions, management fees and expenses all may be associated with mutual fund investments. Please read the prospectus before investing. The indicated rates of return are the historical annual compounded total returns net of fees and expenses payable by the fund (except for figures of one year or less, which are simple total returns) including changes in security value and reinvestment of all dividends/distributions and do not take into account sales, redemption, distribution or optional charges or income taxes payable by any securityholder that would have reduced returns. Mutual funds are not guaranteed, their values change frequently, and past performance may not be repeated.

² The risk level of a fund has been determined in accordance with a standardized risk classification methodology in National Instrument 81-102, that is based on the fund's historical volatility as measured by the 10-year standard deviation of the fund's returns. Where a fund has offered securities to the public for less than 10 years, the standardized methodology requires that the standard deviation of a reference mutual fund or index that reasonably approximates the fund's standard deviation be used to determine the fund's risk rating. Please note that historical performance may not be indicative of future returns and a fund's historical volatility may not be indicative of future volatility.

³ Please refer to the fund's simplified prospectus for distribution information.

⁵ Portfolio allocations will fluctuate over the life of the mutual fund as the portfolio holdings and market value of each security changes. The portfolio manager(s) may change the portfolio allocations in some or all of the sectors.

The contents are not to be used or construed as investment advice or as an endorsement or recommendation of any entity of security discussed.

Certain statements contained in this communication are based in whole or in part on information provided by third parties and CI has taken reasonable steps to ensure their accuracy.

The rates of return are used only to illustrate the effects of the compound growth rate and are not intended to reflect future values or returns on investment in an investment fund.

The "Growth of \$10,000" chart shows the final value of a hypothetical \$10,000 investment in securities in this class of the fund as at the end of the investment period indicated and is not intended to reflect future values or returns on investment in such securities.

Management Expense Ratio ("MER") represents the trailing 12-month management expense ratio, which reflects the cost of running the fund, inclusive of applicable taxes including HST, GST and QST (excluding commissions and other portfolio transaction costs) as a percentage of daily average net asset value the period, including the fund's proportionate share of any underlying fund(s) expenses, if applicable. The MER is reported in each fund's Management Report of Fund Performance ("MRFP"). MRFPs can be found within the Documents tab on ci.com.

CI Global Asset Management® and the CI Global Asset Management design are registered trademarks of CI Global Asset Management Inc. "Trusted Partner in Wealth™" is a trademark of CI Global Asset Management Inc. ©CI Global Asset Management Inc. 2020. All rights reserved.

Published November 2020