

Select 50i50e Managed Portfolio Corporate Class

Class E USD



AS AT OCTOBER 31, 2020

FUND OVERVIEW

This fund invests 50% of its assets in mutual funds that invest primarily in income securities and 50% of its assets in mutual funds that invest primarily in equity securities.

FUND DETAILS

Inception date	July 2011
Total net assets (\$CAD) As at 2020-10-31	\$709.0 million
NAVPS	\$9.5308
MER (%) As at 2020-03-31	2.22
Management fee (%)	1.85
Asset class	Asset Allocation
Currency	USD
Minimum investment	\$100,000 initial / \$5,000 additional
Distribution frequency	Quarterly
Last distribution	\$0.0383

Risk rating²

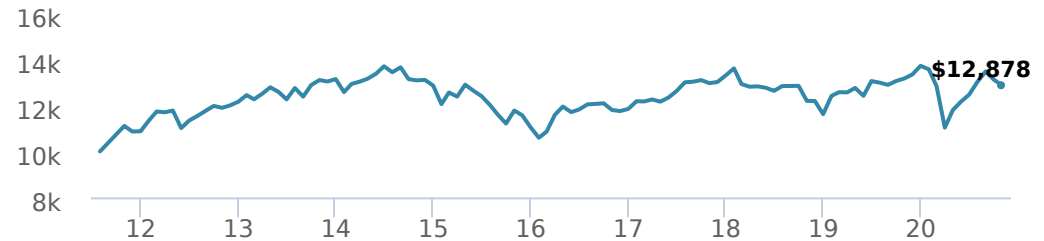


FUND CODES

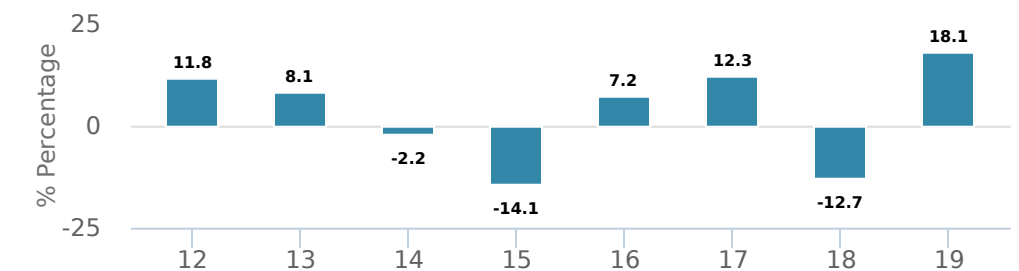
E	17108
O	19108

PERFORMANCE¹

Growth of \$10,000 (since inception date)



Calendar year performance



Average annual compound returns

YTD	1 Mo	3 Mo	6 Mo	1 Y	3 Y	5 Y	10 Y	Inception*
-6.1%	-1.9%	-1.1%	9.1%	-2.2%	-0.2%	1.8%	-	2.8%

*Since inception date

DISTRIBUTION HISTORY³

Payable date	Total	Payable date	Total
2020-09-25	0.0383	2019-06-21	0.0862
2020-06-26	0.0269	2019-03-22	0.1355
2020-03-20	0.0601	2018-12-14	0.0464
2019-12-13	0.0900	2018-09-14	0.0460
2019-09-27	0.0892	2018-06-22	0.0446

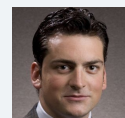
MANAGEMENT TEAM



CI Multi-Asset Management, led by portfolio manager Alfred Lam, oversees CI's managed solutions. The team's philosophy is centred on delivering predictable outcomes for investors by utilizing a full set of asset classes while adding value and managing risk through multiple factors. CI Multi Asset Management is a division of CI Investments Inc, a subsidiary of CI Financial Corp.



Alfred Lam



Marchello Holditch

Select 50i50e Managed Portfolio Corporate Class

Class E USD



AS AT OCTOBER 31, 2020

PORTFOLIO ALLOCATIONS⁵

Asset allocation	(%)	Sector allocation	(%)	Geographic allocation	(%)
International Equity	18.66%	Fixed Income	34.06%	Canada	39.84%
US Equity	18.48%	Other	16.04%	United States	34.72%
Canadian Equity	17.88%	Technology	9.86%	Other	13.14%
Canadian Corporate Bonds	10.08%	Financial Services	9.71%	United Kingdom	2.45%
Cash and Equivalents	7.17%	Cash and Cash Equivalent	7.15%	Cayman Islands	2.25%
Canadian Government Bonds	7.15%	Consumer Services	5.13%	Japan	1.91%
Foreign Government Bonds	7.06%	Basic Materials	5.10%	France	1.70%
Foreign Corporate Bonds	5.05%	Healthcare	4.85%	Netherlands	1.67%
Other	4.57%	Industrial Services	4.65%	Germany	1.19%
Mortgages	3.90%	Consumer Goods	3.45%	Switzerland	1.13%

UNDERLYING FUND ALLOCATIONS

	Sector	(%)
1. CI Income Fund Class A	Mutual Fund	39.32%
2. Select International Equity Managed Fund Class I	Mutual Fund	15.95%
3. Select Canadian Equity Managed Fund Class I	Mutual Fund	13.78%
4. Select U.S. Equity Managed Fund Class I	Mutual Fund	11.83%
5. CI Munro Alternative Global Growth Fund Class I	Mutual Fund	5.13%
6. CI DoubleLine Total Return Bond US\$ Fund IC\$	Mutual Fund	4.73%
7. Signature Canadian Bond Fund Class I	Fixed Income	2.06%
8. Sentry Precious Metals Fund Series I	Mutual Fund	1.98%
9. SPDR Gold Trust ETF (GLD)	Exchange Traded Fund	1.65%
10. iShares 20+ Year Treasury Bond ETF (TLT)	Fixed Income	1.58%
11. iShares S&P/TSX Global Gold Index ETF (XGD)	Exchange Traded Fund	0.53%
12. iShares Barclays TIPS Bond ETF (TIP)	Fixed Income	0.51%

TOP HOLDINGS

	Sector	(%)
1. CI First Asset MStar Canada Moment Indx ETF (WXM)	Exchange Traded Fund	1.96%
2. Gold Bullion	Other	1.65%
3. iShares Core S&P/TSX Capped Composit Idx ETF (XIC)	Exchange Traded Fund	1.55%
4. SPDR Gold Trust ETF (GLD)	Exchange Traded Fund	1.27%
5. United States Treasury 2.00% 15-Feb-2050	Fixed Income	1.23%
6. Microsoft Corp	Computer Electronics	1.01%
7. Amazon.com Inc	Retail	0.81%
8. Ontario Province 2.60% 02-Jun-2025	Fixed Income	0.71%
9. Ontario Province 1.75% 08-Sep-2025	Fixed Income	0.70%
10. CI Munro Alternative Global Growth Fund Class I	Mutual Fund	0.69%
11. Alibaba Group Holding Ltd - ADR	Information Technology	0.59%
12. Royal Bank of Canada	Banking	0.55%
13. Alphabet Inc CI A	Information Technology	0.54%
14. Ontario Province 2.65% 02-Dec-2050	Fixed Income	0.52%
15. CI First Asset Gold+ Giants Covered Call ETF(CGXF)	Exchange Traded Fund	0.52%

Note: This page is not complete without disclaimers on the next page.

Over 35,000 financial advisors have chosen CI Global Asset Management as a partner. We believe that Canadians have the best opportunity for investments success by using the services of a professional financial advisor. [Learn more at ci.com.](#)

¹ Commissions, trailing commissions, management fees and expenses all may be associated with mutual fund investments. Please read the prospectus before investing. The indicated rates of return are the historical annual compounded total returns net of fees and expenses payable by the fund (except for figures of one year or less, which are simple total returns) including changes in security value and reinvestment of all dividends/distributions and do not take into account sales, redemption, distribution or optional charges or income taxes payable by any securityholder that would have reduced returns. Mutual funds are not guaranteed, their values change frequently, and past performance may not be repeated.

² The risk level of a fund has been determined in accordance with a standardized risk classification methodology in National Instrument 81-102, that is based on the fund's historical volatility as measured by the 10-year standard deviation of the fund's returns. Where a fund has offered securities to the public for less than 10 years, the standardized methodology requires that the standard deviation of a reference mutual fund or index that reasonably approximates the fund's standard deviation be used to determine the fund's risk rating. Please note that historical performance may not be indicative of future returns and a fund's historical volatility may not be indicative of future volatility.

³ Please refer to the fund's simplified prospectus for distribution information.

⁵ Portfolio allocations will fluctuate over the life of the mutual fund as the portfolio holdings and market value of each security changes. The portfolio manager(s) may change the portfolio allocations in some or all of the sectors.

The contents are not to be used or construed as investment advice or as an endorsement or recommendation of any entity of security discussed.

Certain statements contained in this communication are based in whole or in part on information provided by third parties and CI has taken reasonable steps to ensure their accuracy.

The rates of return are used only to illustrate the effects of the compound growth rate and are not intended to reflect future values or returns on investment in an investment fund.

The "Growth of \$10,000" chart shows the final value of a hypothetical \$10,000 investment in securities in this class of the fund as at the end of the investment period indicated and is not intended to reflect future values or returns on investment in such securities.

Management Expense Ratio ("MER") represents the trailing 12-month management expense ratio, which reflects the cost of running the fund, inclusive of applicable taxes including HST, GST and QST (excluding commissions and other portfolio transaction costs) as a percentage of daily average net asset value the period, including the fund's proportionate share of any underlying fund(s) expenses, if applicable. The MER is reported in each fund's Management Report of Fund Performance ("MRFP"). MRFPs can be found within the Documents tab on ci.com.

CI Global Asset Management® and the CI Global Asset Management design are registered trademarks of CI Global Asset Management Inc. "Trusted Partner in Wealth™" is a trademark of CI Global Asset Management Inc. ©CI Global Asset Management Inc. 2020. All rights reserved.

Published November 2020