

Sentry Precious Metals Fund

Series I CAD

Not available to retail investors / for approved investors only



AS AT AUGUST 31, 2020

FUND OVERVIEW

Sentry Precious Metals Fund aims to provide long-term capital appreciation by investing primarily in equity securities of companies engaged in the precious metals sector.

FUND DETAILS

Inception date	August 2008
Total net assets (\$CAD) As at 2020-08-31	\$476.6 million
NAVPS	\$87.4689
MER (%) As at 2020-03-31	0.00
Management fee (%)	Negotiable
Asset class	Sector Equity
Currency	CAD
Minimum investment	Negotiable

Risk rating²



FUND CODES

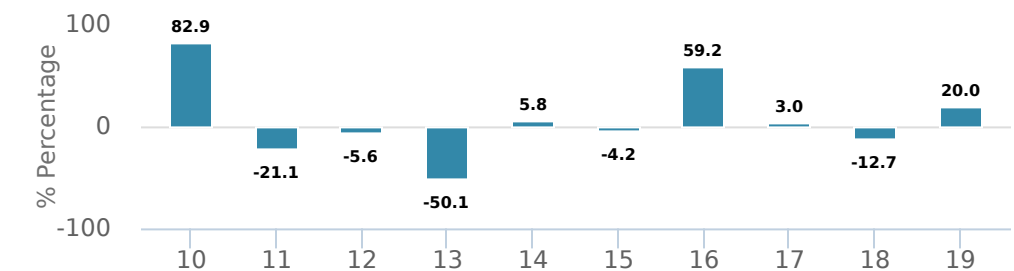
I	NL 55203
A	50203
B	DSC 51203 LL 52203
E	16080
EF	15080
F	54203
O	18080
P	58203

PERFORMANCE¹

Growth of \$10,000 (since inception date)



Calendar year performance



Average annual compound returns

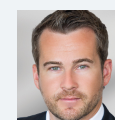
YTD	1 Mo	3 Mo	6 Mo	1 Y	3 Y	5 Y	10 Y	Inception*
65.9%	1.9%	31.0%	90.9%	61.5%	18.4%	22.0%	3.0%	10.3%

*Since inception date

MANAGEMENT TEAM



Sentry Investment Management offers expertise across a multitude of asset classes including equities, fixed income and real assets. Each member of the team shares a disciplined investment philosophy and a common goal: to deliver superior risk-adjusted returns measured over a period of years, not quarters or months. Sentry Investment Management is a division of CI Investments Inc., a subsidiary of CI Financial Corp.



Jon Case

Sentry Precious Metals Fund

Series I CAD

Not available to retail investors / for approved investors only



AS AT AUGUST 31, 2020

PORTFOLIO ALLOCATIONS⁵

Asset allocation	(%)	Sector allocation	(%)	Geographic allocation	(%)
Canadian Equity	74.82%	Basic Materials	87.73%	Canada	87.10%
Cash and Equivalents	12.29%	Cash and Cash Equivalent	12.29%	Cayman Islands	6.39%
International Equity	10.92%	Consumer Goods	0.01%	Australia	4.48%
US Equity	2.02%	Other	-0.03%	United States	2.03%
Other	-0.05%			South Africa	0.02%
				United Kingdom	0.01%
				Other	-0.03%

TOP HOLDINGS

	Sector	(%)
1. K92 Mining Inc	Metals and Mining	9.99%
2. Alacer Gold Corp	Gold and Precious Metals	9.25%
3. Pretium Resources Inc	Metals and Mining	7.11%
4. Artemis Gold Inc	Gold and Precious Metals	6.90%
5. Sandstorm Gold Ltd	Gold and Precious Metals	6.86%
6. Endeavour Mining Corp	Gold and Precious Metals	6.39%
7. Centerra Gold Inc	Gold and Precious Metals	4.10%
8. Kirkland Lake Gold Ltd	Gold and Precious Metals	4.00%
9. Agnico Eagle Mines Ltd	Gold and Precious Metals	3.20%
10. Gold Standard Ventures Corp	Gold and Precious Metals	3.16%
11. Osisko Gold Royalties Ltd	Gold and Precious Metals	2.99%
12. Golden Star Resources Ltd	Gold and Precious Metals	2.45%
13. Roxgold Inc	Metals and Mining	2.24%
14. Torex Gold Resources Inc	Gold and Precious Metals	2.22%
15. Newmont Mining Corp	Gold and Precious Metals	2.00%

Note: This page is not complete without disclaimers on the next page.

Over 35,000 financial advisors have chosen CI Investments as a partner. We believe that Canadians have the best opportunity for investment success by using the services of a professional financial advisor. [Learn more at ci.com](https://www.ci.com).

¹ Commissions, trailing commissions, management fees and expenses all may be associated with mutual fund investments. Please read the prospectus before investing. The indicated rates of return are the historical annual compounded total returns net of fees and expenses payable by the fund (except for figures of one year or less, which are simple total returns) including changes in security value and reinvestment of all dividends/distributions and do not take into account sales, redemption, distribution or optional charges or income taxes payable by any securityholder that would have reduced returns. Mutual funds are not guaranteed, their values change frequently, and past performance may not be repeated.

² The risk level of a fund has been determined in accordance with a standardized risk classification methodology in National Instrument 81-102, that is based on the fund's historical volatility as measured by the 10-year standard deviation of the fund's returns. Where a fund has offered securities to the public for less than 10 years, the standardized methodology requires that the standard deviation of a reference mutual fund or index that reasonably approximates the fund's standard deviation be used to determine the fund's risk rating. Please note that historical performance may not be indicative of future returns and a fund's historical volatility may not be indicative of future volatility.

⁵ Portfolio allocations will fluctuate over the life of the mutual fund as the portfolio holdings and market value of each security changes. The portfolio manager(s) may change the portfolio allocations in some or all of the sectors.

The contents are not to be used or construed as investment advice or as an endorsement or recommendation of any entity of security discussed.

Certain statements contained in this communication are based in whole or in part on information provided by third parties and CI has taken reasonable steps to ensure their accuracy.

The rates of return are used only to illustrate the effects of the compound growth rate and are not intended to reflect future values or returns on investment in an investment fund.

The "Growth of \$10,000" chart shows the final value of a hypothetical \$10,000 investment in securities in this class of the fund as at the end of the investment period indicated and is not intended to reflect future values or returns on investment in such securities.

Management Expense Ratio ("MER") represents the trailing 12-month management expense ratio, which reflects the cost of running the fund, inclusive of applicable taxes including HST, GST and QST (excluding commissions and other portfolio transaction costs) as a percentage of daily average net asset value the period, including the fund's proportionate share of any underlying fund(s) expenses, if applicable. The MER is reported in each fund's Management Report of Fund Performance ("MRFP"). MRFPs can be found within the Documents tab on ci.com.

CI Investments® and the CI Investments design are registered trademarks of CI Investments Inc. "Trusted Partner in Wealth™" is a trademark of CI Investments Inc. ©CI Investments Inc. 2020. All rights reserved.

Published September 2020