

Sentry Resource Opportunities Class

Series P CAD



AS AT SEPTEMBER 30, 2020

FUND OVERVIEW

Sentry Resource Opportunities Class aims to provide long-term capital appreciation by investing primarily in equity securities of companies involved in the energy and natural resources sector located anywhere in the world.

FUND DETAILS

Inception date	March 2015
Total net assets (\$CAD) As at 2020-09-30	\$22.2 million
NAVPS	\$18.7113
MER (%) As at 2020-03-31	0.16
Management fee (%)	Negotiable
Asset class	Sector Equity
Currency	CAD
Minimum investment	\$500 initial / \$25 additional
Distribution frequency	Annually
Last distribution	\$0.1479

Risk rating²

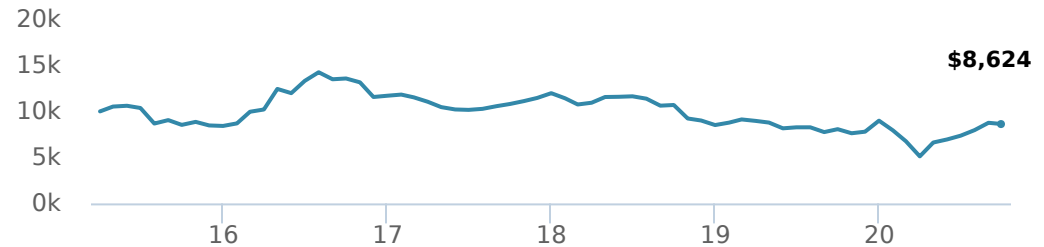


FUND CODES

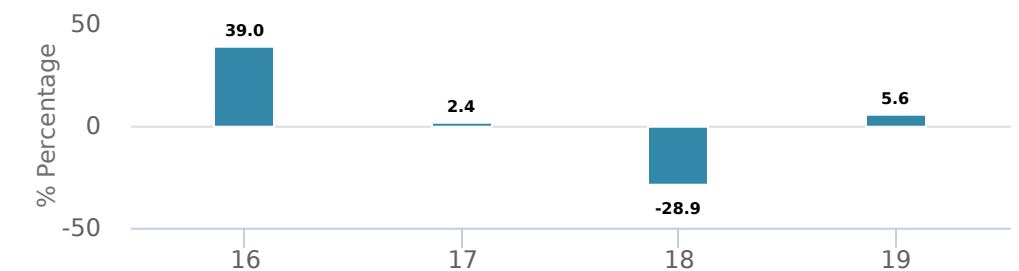
P	58011
A	50011
B	DSC 51011 LL 52011
F	54011
I	55011

PERFORMANCE¹

Growth of \$10,000 (since inception date)



Calendar year performance



Average annual compound returns

YTD	1 Mo	3 Mo	6 Mo	1 Y	3 Y	5 Y	10 Y	Inception*
-4.1%	-1.6%	17.1%	68.7%	6.9%	-7.2%	0.2%	-	-2.6%

*Since inception date

DISTRIBUTION HISTORY³

Payable date	Total
2019-12-30	0.1479
2018-12-14	0.1472

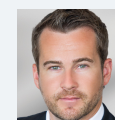
CI PREFERRED PRICING⁴

Investment amount	Combined fee reduction
\$100,000 - \$250,000	0.00%
\$250,000 - \$500,000	0.03%
\$500,000 - \$1,000,000	0.05%
\$1,000,000 - \$2,500,000	0.08%
\$2,500,000 - \$5,000,000	0.10%
\$5,000,000 and above	0.13%

MANAGEMENT TEAM



Sentry Investment Management offers expertise across a multitude of asset classes including equities, fixed income and real assets. Each member of the team shares a disciplined investment philosophy and a common goal: to deliver superior risk-adjusted returns measured over a period of years, not quarters or months. Sentry Investment Management is a division of CI Investments Inc., a subsidiary of CI Financial Corp.



Jon Case

AS AT SEPTEMBER 30, 2020

PORTFOLIO ALLOCATIONS⁵

Asset allocation	(%)	Sector allocation	(%)	Geographic allocation	(%)
Canadian Equity	71.81%	Basic Materials	67.40%	Canada	79.37%
International Equity	19.03%	Energy	25.05%	Australia	9.15%
Cash and Equivalents	7.56%	Cash and Cash Equivalent	7.56%	France	7.94%
US Equity	1.61%	Other	-0.01%	Chile	1.94%
Other	-0.01%			United States	1.61%
				Other	-0.01%

TOP HOLDINGS

	Sector	(%)
1. Teck Resources Ltd CI B	Metals and Mining	8.18%
2. Gaztransport et Technigaz SA	Energy Services and Equipment	7.94%
3. Champion Iron Ltd	Metals and Mining	6.26%
4. HudBay Minerals Inc	Metals and Mining	5.91%
5. SSR Mining Inc	Gold and Precious Metals	5.01%
6. Tourmaline Oil Corp	Oil and Gas Production	4.76%
7. Labrador Iron Ore Royalty Corp	Metals and Mining	4.69%
8. Parex Resources Inc	Oil and Gas Production	3.79%
9. First Quantum Minerals Ltd	Metals and Mining	3.75%
10. Birchcliff Energy Ltd	Oil and Gas Production	3.62%
11. Tinka Resources Ltd	Metals and Mining	3.37%
12. Osisko Gold Royalties Ltd	Gold and Precious Metals	3.20%
13. Regulus Resources Inc	Gold and Precious Metals	3.18%
14. Clean Air Metals Inc	Gold and Precious Metals	3.02%
15. Centaurus Metals Ltd	Gold and Precious Metals	2.89%

Over 35,000 financial advisors have chosen CI Investments as a partner. We believe that Canadians have the best opportunity for investment success by using the services of a professional financial advisor. [Learn more at ci.com](https://www.ci.com).

¹ Commissions, trailing commissions, management fees and expenses all may be associated with mutual fund investments. Please read the prospectus before investing. The indicated rates of return are the historical annual compounded total returns net of fees and expenses payable by the fund (except for figures of one year or less, which are simple total returns) including changes in security value and reinvestment of all dividends/distributions and do not take into account sales, redemption, distribution or optional charges or income taxes payable by any securityholder that would have reduced returns. Mutual funds are not guaranteed, their values change frequently, and past performance may not be repeated.

² The risk level of a fund has been determined in accordance with a standardized risk classification methodology in National Instrument 81-102, that is based on the fund's historical volatility as measured by the 10-year standard deviation of the fund's returns. Where a fund has offered securities to the public for less than 10 years, the standardized methodology requires that the standard deviation of a reference mutual fund or index that reasonably approximates the fund's standard deviation be used to determine the fund's risk rating. Please note that historical performance may not be indicative of future returns and a fund's historical volatility may not be indicative of future volatility.

³ Please refer to the fund's simplified prospectus for distribution information.

⁴ CI Preferred Pricing fee reductions apply to management and administration fees and start at \$100,000.

⁵ Portfolio allocations will fluctuate over the life of the mutual fund as the portfolio holdings and market value of each security changes. The portfolio manager(s) may change the portfolio allocations in some or all of the sectors.

The contents are not to be used or construed as investment advice or as an endorsement or recommendation of any entity of security discussed.

Certain statements contained in this communication are based in whole or in part on information provided by third parties and CI has taken reasonable steps to ensure their accuracy.

The rates of return are used only to illustrate the effects of the compound growth rate and are not intended to reflect future values or returns on investment in an investment fund.

The "Growth of \$10,000" chart shows the final value of a hypothetical \$10,000 investment in securities in this class of the fund as at the end of the investment period indicated and is not intended to reflect future values or returns on investment in such securities.

Management Expense Ratio ("MER") represents the trailing 12-month management expense ratio, which reflects the cost of running the fund, inclusive of applicable taxes including HST, GST and QST (excluding commissions and other portfolio transaction costs) as a percentage of daily average net asset value the period, including the fund's proportionate share of any underlying fund(s) expenses, if applicable. The MER is reported in each fund's Management Report of Fund Performance ("MRFP"). MRFPs can be found within the Documents tab on ci.com.

CI Investments® and the CI Investments design are registered trademarks of CI Investments Inc. "Trusted Partner in Wealth™" is a trademark of CI Investments Inc. ©CI Investments Inc. 2020. All rights reserved.

Published October 2020