

# Cambridge Global Dividend Fund

Class A



AS AT AUGUST 31, 2019

## FUND OVERVIEW

This fund invests primarily in equity securities of companies anywhere in the world that pay, or may be expected to pay, dividends.

## FUND DETAILS

Inception date	July 2013
Total net assets (\$CAD) As at 2019-08-31	\$987.7 million
NAVPS	\$13.1041
MER (%) As at 2018-09-30	2.45
Management fee (%)	2.000
Asset class	Global Equity
Currency	CAD
Minimum investment	\$500 initial / \$25 additional
Distribution frequency	Monthly
Last distribution	\$0.0200

## Risk rating<sup>3</sup>



## FUND CODES

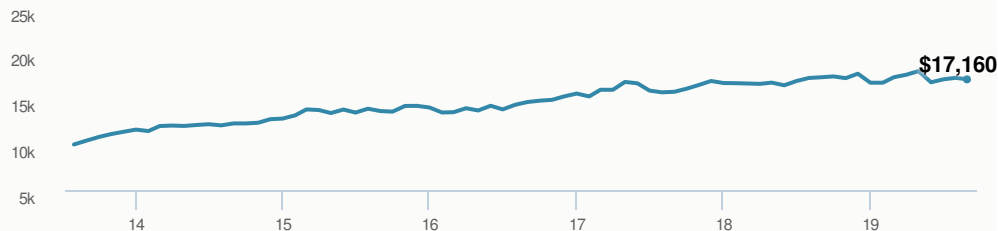
A	ISC 2639 DSC 3639 LL 1639
E	16066
EF	15066
F	4639
I	5639
O	18066
P	90058

## DISTRIBUTION HISTORY<sup>4</sup>

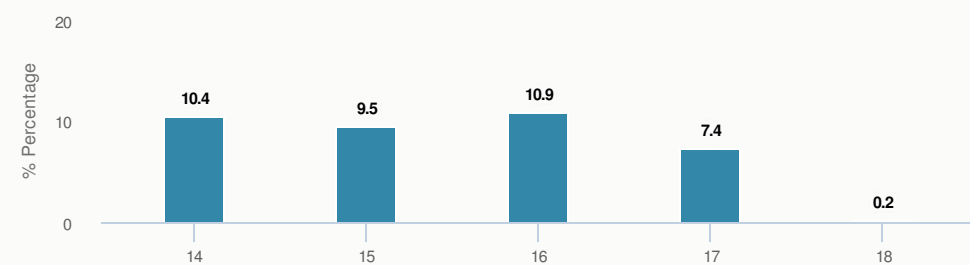
Payable date	Total	Payable date	Total
2019-08-23	0.0200	2019-03-22	0.0200
2019-07-26	0.0200	2019-02-22	0.0200
2019-06-21	0.0200	2019-01-25	0.0200
2019-05-24	0.0200	2018-12-14	0.1278
2019-04-26	0.0200	2018-11-23	0.0200

## PERFORMANCE<sup>1</sup>

Growth of \$10,000 (since inception date)



## Calendar year performance



## Average annual compound returns

	YTD	1 Mo	3 Mo	6 Mo	1 Y	3 Y	5 Y	10 Y	Inception*
	6.8%	-1.0%	1.9%	-1.4%	3.1%	6.9%	7.8%	-%	9.3%

\*Since inception date

## PORTFOLIO ALLOCATIONS<sup>2</sup>

Asset allocation	(%)	Sector allocation	(%)
US Equity	43.84%	Financial Services	15.53%
International Equity	30.45%	Cash and Cash Equivalent	13.58%
Cash and Equivalents	13.58%	Technology	12.51%
Income Trust Units	7.63%	Healthcare	12.47%
Canadian Equity	4.51%	Energy	10.79%
Other	-0.01%	Industrial Goods	10.66%
		Consumer Goods	8.49%
		Basic Materials	7.92%
		Industrial Services	5.15%
		Other	2.90%
Geographic allocation	(%)		
United States	64.88%		
United Kingdom	10.46%		
France	4.74%		
Canada	4.67%		
Germany	3.71%		
Austria	3.19%		
Singapore	2.51%		
Bermuda	2.20%		
Other	2.05%		
Luxembourg	1.59%		

Note: This page is not complete without disclaimers on the next page.

AS AT AUGUST 31, 2019

## TOP HOLDINGS

	Sector	(%)
1. Verizon Communications Inc	Diversified Technology	5.12%
2. Black Stone Minerals LP - Units	Diversified Energy	4.53%
3. Imperial Tobacco Group PLC	Food, Beverage and Tobacco	3.91%
4. McKesson Corp	Healthcare Services	3.89%
5. Gilead Sciences Inc	Drugs	3.88%
6. Brenntag AG	Chemicals and Gases	3.71%
7. Andritz AG	Construction Materials	3.19%
8. Viper Energy Partners LP - Units	Oil and Gas Production	3.10%
9. CBOE Holdings Inc	Diversified Financial Services	3.06%
10. CSX Corp	Transportation	3.06%
11. Wells Fargo & Co	Banking	3.04%
12. BlackRock Inc	Diversified Financial Services	3.00%
13. Philip Morris International Inc	Consumer Non-durables	2.99%
14. Walgreens Boots Alliance Inc	Retail	2.91%
15. Linde PLC	Chemicals and Gases	2.86%

## MANAGEMENT TEAM



Cambridge Global Asset Management, a division of CI Investments Inc., is led by Chief Investment Officer Brandon Snow. The team, including lead portfolio managers Robert Swanson (CI Global Investments Inc.), Stephen Groff and Greg Dean, invests in companies building long-term economic value. CI Global Investments Inc. is a firm registered with the U.S. Securities and Exchange Commission and an affiliate of CI Investments Inc. Certain funds associated with Cambridge Global Asset Management are sub-advised by CI Global Investments Inc.



Stephen Groff

Over 35,000 financial advisors have chosen CI Investments as a partner. We believe that Canadians have the best opportunity for investments success by using the services of a professional financial advisor. [Learn more at ci.com](http://ci.com).

<sup>1</sup> Commissions, trailing commissions, management fees and expenses all may be associated with mutual fund investments. Please read the prospectus before investing. The indicated rates of return are the historical annual compounded total returns (net of fees and expenses payable by the fund) including changes in security value and reinvestment of all dividends/distributions and do not take into account sales, redemption, distribution or optional charges or income taxes payable by any securityholder that would have reduced returns. Mutual funds are not guaranteed, their values change frequently, and past performance may not be repeated.

<sup>2</sup> Portfolio allocations will fluctuate over the life of the mutual fund as the portfolio holdings and market value of each security changes. The portfolio manager(s) may change the portfolio allocations in some or all of the sectors.

<sup>3</sup> The risk level of a fund has been determined in accordance with a standardized risk classification methodology in National Instrument 81-102, that is based on the fund's historical volatility as measured by the 10-year standard deviation of the fund's returns. Where a fund has offered securities to the public for less than 10 years, the standardized methodology requires that the standard deviation of a reference mutual fund or index that reasonably approximates the fund's standard deviation be used to determine the fund's risk rating. Please note that historical performance may not be indicative of future returns and a fund's historical volatility may not be indicative of future volatility.

<sup>4</sup> Please refer to the fund's simplified prospectus for distribution information.

The contents are not to be used or construed as investment advice or as an endorsement or recommendation of any entity of security discussed.

© CI Investments and the CI Investments design are registered trademarks of CI Investments Inc. © CI Investments Inc. 2019. All rights reserved. 2019. "Trusted Partner in Wealth™" is a trademark of CI Investments Inc.

Published August 2019