

CI Global High Dividend Advantage Corporate Class



Class F USD

Not available for distribution

AS AT DECEMBER 31, 2020

FUND OVERVIEW

This fund invests primarily in dividend-paying common and preferred shares, debentures, income trusts, equity-related securities and convertible securities of issuers anywhere in the world.

FUND DETAILS

Inception date	February 2007
Total net assets (\$CAD) As at 2020-12-31	\$39.1 million
NAVPS	\$11.1144
MER (%) As at 2020-09-30	1.46
Management fee (%)	1.10
Asset class	Global Dividend
Currency	USD
Minimum investment	\$500 initial / \$25 additional
Distribution frequency	Quarterly
Last distribution	\$0.0105

Risk rating²

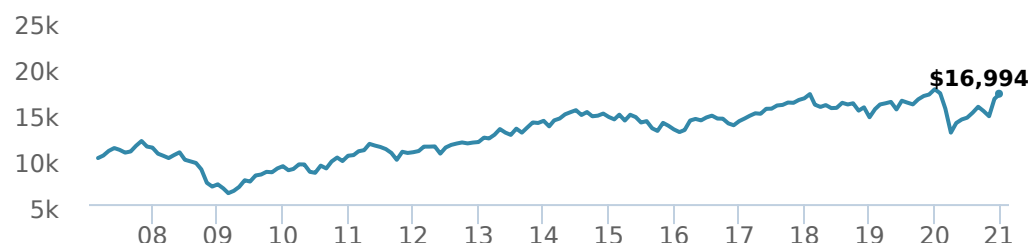


FUND CODES

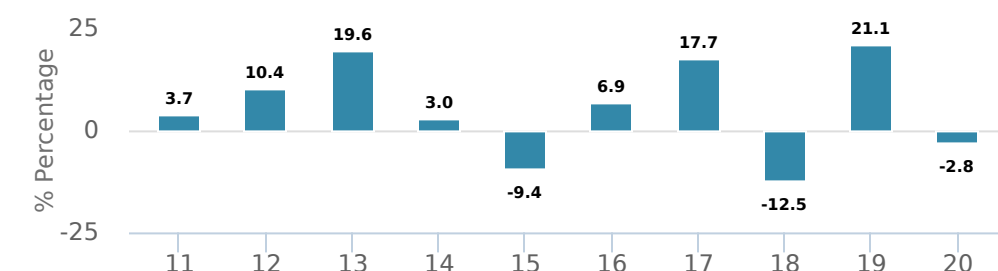
F	4514
A	ISC 2514 DSC 3514 LL 1519
E	17126
I	5502
O	19126

PERFORMANCE¹

Growth of \$10,000 (since inception date)



Calendar year performance



Average annual compound returns

YTD	1 Mo	3 Mo	6 Mo	1 Y	3 Y	5 Y	10 Y	Inception*
-2.8%	3.4%	12.4%	18.1%	-2.8%	1.0%	5.3%	5.2%	3.9%

*Since inception date

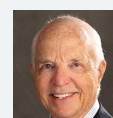
DISTRIBUTION HISTORY³

Payable date	Total	Payable date	Total
2020-12-18	0.0105	2019-09-27	0.0760
2020-09-25	0.0095	2019-06-21	0.0738
2020-06-26	0.0362	2019-03-22	0.1137
2020-03-20	0.0323	2018-12-14	0.0596
2019-12-13	0.0799	2018-09-14	0.0588

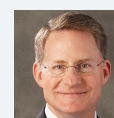
MANAGEMENT TEAM



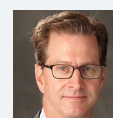
Epoch Investment Partners is an investment management firm founded by Wall Street veteran William Priest and associates. Epoch uses a value-based approach that focuses on companies with superior shareholder yield. Epoch Investment Partners is a sub-advisor to CI Investments Inc.



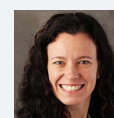
William W. Priest



Michael Welhoelter



John M. Tobin



Kera Van Valen

CI Global High Dividend Advantage Corporate Class

Class F USD

Not available for distribution



AS AT DECEMBER 31, 2020

PORTFOLIO ALLOCATIONS⁵

Asset allocation	(%)	Sector allocation	(%)	Geographic allocation	(%)
US Equity	50.59%	Technology	15.82%	United States	51.16%
International Equity	37.87%	Healthcare	14.07%	Canada	10.99%
Canadian Equity	7.33%	Consumer Goods	12.94%	Germany	7.80%
Cash and Equivalents	4.23%	Other	12.31%	United Kingdom	7.18%
Other	-0.02%	Financial Services	12.30%	Other	6.32%
		Utilities	9.64%	France	5.55%
		Telecommunications	7.50%	Italy	3.36%
		Industrial Goods	5.41%	Switzerland	2.69%
		Industrial Services	5.21%	Korea, Republic Of	2.49%
		Consumer Services	4.80%	Japan	2.46%

TOP HOLDINGS

	Sector	(%)
1. Verizon Communications Inc	Diversified Telecommunications	1.92%
2. Allianz SE	Diversified Financial Services	1.85%
3. Samsung Electronics Co Ltd - ADR	Diversified Technology	1.83%
4. Microsoft Corp	Computer Electronics	1.80%
5. AbbVie Inc	Drugs	1.75%
6. Snam SpA	Gas Utilities	1.67%
7. Taiwan Semiconductor Manufacturing Co Ltd - ADR	Computer Electronics	1.65%
8. Nutrien Ltd	Chemicals and Gases	1.64%
9. Takeda Pharmaceutical Co Ltd	Drugs	1.57%
10. International Business Machines Corp	Diversified Technology	1.57%
11. Muenchener Rueckversicherungs Gesellschaft AG	Insurance	1.56%
12. Philip Morris International Inc	Consumer Non-durables	1.53%
13. Total SA	Oil and Gas Production	1.46%
14. Texas Instruments Inc	Computer Electronics	1.45%
15. KLA-Tencor Corp	Computer Electronics	1.44%

Note: This page is not complete without disclaimers on the next page.

Over 35,000 financial advisors have chosen CI Global Asset Management as a partner. We believe that Canadians have the best opportunity for investments success by using the services of a professional financial advisor. [Learn more at ci.com.](#)

¹ Commissions, trailing commissions, management fees and expenses all may be associated with mutual fund investments. Please read the prospectus before investing. The indicated rates of return are the historical annual compounded total returns net of fees and expenses payable by the fund (except for figures of one year or less, which are simple total returns) including changes in security value and reinvestment of all dividends/distributions and do not take into account sales, redemption, distribution or optional charges or income taxes payable by any securityholder that would have reduced returns. Mutual funds are not guaranteed, their values change frequently, and past performance may not be repeated.

² The risk level of a fund has been determined in accordance with a standardized risk classification methodology in National Instrument 81-102, that is based on the fund's historical volatility as measured by the 10-year standard deviation of the fund's returns. Where a fund has offered securities to the public for less than 10 years, the standardized methodology requires that the standard deviation of a reference mutual fund or index that reasonably approximates the fund's standard deviation be used to determine the fund's risk rating. Please note that historical performance may not be indicative of future returns and a fund's historical volatility may not be indicative of future volatility.

³ Please refer to the fund's simplified prospectus for distribution information.

⁵ Portfolio allocations will fluctuate over the life of the mutual fund as the portfolio holdings and market value of each security changes. The portfolio manager(s) may change the portfolio allocations in some or all of the sectors.

The contents are not to be used or construed as investment advice or as an endorsement or recommendation of any entity of security discussed.

Certain statements contained in this communication are based in whole or in part on information provided by third parties and CI has taken reasonable steps to ensure their accuracy.

The rates of return are used only to illustrate the effects of the compound growth rate and are not intended to reflect future values or returns on investment in an investment fund.

The "Growth of \$10,000" chart shows the final value of a hypothetical \$10,000 investment in securities in this class of the fund as at the end of the investment period indicated and is not intended to reflect future values or returns on investment in such securities.

Management Expense Ratio ("MER") represents the trailing 12-month management expense ratio, which reflects the cost of running the fund, inclusive of applicable taxes including HST, GST and QST (excluding commissions and other portfolio transaction costs) as a percentage of daily average net asset value the period, including the fund's proportionate share of any underlying fund(s) expenses, if applicable. The MER is reported in each fund's Management Report of Fund Performance ("MRFP"). MRFPs can be found within the Documents tab on ci.com.

CI Global Asset Management® and the CI Global Asset Management design are registered trademarks of CI Global Asset Management Inc. "Trusted Partner in Wealth™" is a trademark of CI Global Asset Management Inc. ©CI Global Asset Management Inc. 2021. All rights reserved.

Published January 2021