

CI American Managers® Corporate Class

Class IT8 CAD

Not available to retail investors / for approved investors only



AS AT SEPTEMBER 30, 2020

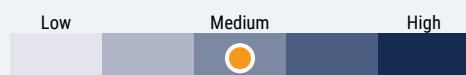
FUND OVERVIEW

This fund invests primarily in equity and equity-related securities of companies that are located in countries that have signed the North American Free Trade Agreement (NAFTA) (or its successor).

FUND DETAILS

| | |
|--|-----------------|
| Inception date | December 2011 |
| Total net assets (\$CAD) As at 2020-09-30 | \$635.1 million |
| NAVPS | \$11.5079 |
| MER (%) As at 2020-03-31 | 0.00 |
| Management fee (%) | Negotiable |
| Asset class | U.S. Equity |
| Currency | CAD |
| Minimum investment | Negotiable |
| Distribution frequency | Monthly |
| Last distribution | \$0.1195 |

Risk rating²

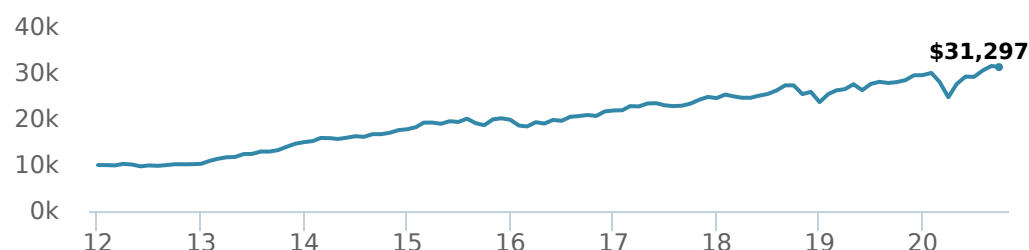


FUND CODES

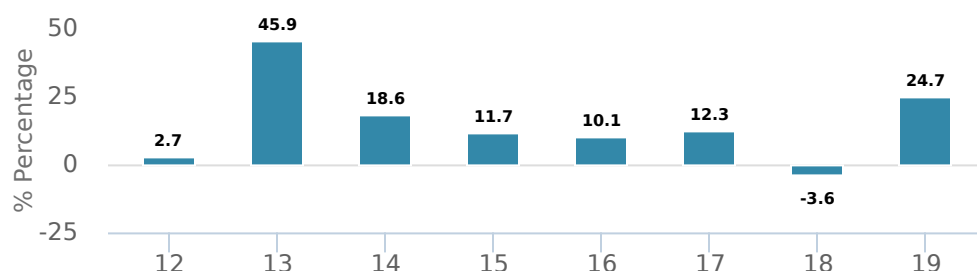
| | T8 | |
|----|-------------------------------|------------------------------------|
| I | 969 | 023T8 |
| A | ISC 209 DSC 709 LL 1709 | ISC 623T8 DSC 723T8 LL 823T8 |
| E | 16001 | 16501 |
| EF | 15001 | 15501 |
| F | 268 | 923T8 |
| O | 18001 | 18501 |
| P | 90016 | |

PERFORMANCE¹

Growth of \$10,000 (since inception date)



Calendar year performance



Average annual compound returns

| YTD | 1 Mo | 3 Mo | 6 Mo | 1 Y | 3 Y | 5 Y | 10 Y | Inception* |
|------|-------|------|-------|-------|-------|-------|------|------------|
| 6.0% | -0.8% | 7.3% | 26.5% | 11.7% | 10.2% | 10.9% | - | 13.9% |

*Since inception date

DISTRIBUTION HISTORY³

| Payable date | Total | Payable date | Total |
|--------------|--------|--------------|--------|
| 2020-09-25 | 0.1195 | 2020-06-25 | 0.0803 |
| 2020-09-24 | 0.0803 | 2020-05-22 | 0.0803 |
| 2020-08-28 | 0.0803 | 2020-04-24 | 0.0803 |
| 2020-07-24 | 0.0803 | 2020-03-20 | 0.2040 |
| 2020-06-26 | 0.0568 | 2020-03-19 | 0.0803 |

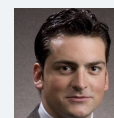
MANAGEMENT TEAM



CI Multi-Asset Management, led by portfolio manager Alfred Lam, oversees CI's managed solutions. The team's philosophy is centred on delivering predictable outcomes for investors by utilizing a full set of asset classes while adding value and managing risk through multiple factors. CI Multi Asset Management is a division of CI Investments Inc, a subsidiary of CI Financial Corp.



Alfred Lam



Marchello Holditch

CI American Managers® Corporate Class

Class IT8 CAD

Not available to retail investors / for approved investors only



AS AT SEPTEMBER 30, 2020

PORTFOLIO ALLOCATIONS⁵

| Asset allocation | (%) | Sector allocation | (%) | Geographic allocation | (%) |
|----------------------|--------|--------------------------|--------|-----------------------|--------|
| US Equity | 86.80% | Technology | 24.95% | United States | 89.61% |
| Cash and Equivalents | 4.28% | Financial Services | 18.39% | Canada | 5.49% |
| International Equity | 3.62% | Healthcare | 14.05% | United Kingdom | 1.59% |
| Canadian Equity | 3.27% | Consumer Services | 12.16% | Bermuda | 1.36% |
| Income Trust Units | 2.03% | Industrial Goods | 6.80% | Singapore | 0.81% |
| | | Industrial Services | 6.72% | Netherlands | 0.57% |
| | | Other | 5.78% | Ireland | 0.19% |
| | | Cash and Cash Equivalent | 4.28% | Cayman Islands | 0.19% |
| | | Consumer Goods | 4.19% | Other | 0.12% |
| | | Telecommunications | 2.68% | Belgium | 0.07% |

TOP HOLDINGS

| | Sector | (%) |
|---|--------------------------------|-------|
| 1. Microsoft Corp | Computer Electronics | 3.71% |
| 2. Facebook Inc Cl A | Information Technology | 2.91% |
| 3. Alphabet Inc Cl C | Information Technology | 2.53% |
| 4. MasterCard Inc | Diversified Financial Services | 2.27% |
| 5. Amazon.com Inc | Retail | 2.12% |
| 6. Thermo Fisher Scientific Inc | Healthcare Equipment | 1.67% |
| 7. JPMorgan Chase & Co | Diversified Financial Services | 1.60% |
| 8. CoStar Group Inc | Professional Services | 1.56% |
| 9. Brookfield Asset Management Inc Cl A | Diversified Financial Services | 1.34% |
| 10. Visa Inc Cl A | Specialty Finance | 1.27% |
| 11. Aon PLC | Insurance | 1.19% |
| 12. UnitedHealth Group Inc | Healthcare Services | 1.16% |
| 13. Cigna Corp | Insurance | 1.11% |
| 14. PayPal Holdings Inc | Professional Services | 1.07% |
| 15. Oracle Corp | Information Technology | 1.05% |

Note: This page is not complete without disclaimers on the next page.

Over 35,000 financial advisors have chosen CI Investments as a partner. We believe that Canadians have the best opportunity for investment success by using the services of a professional financial advisor. [Learn more at ci.com](https://www.ci.com).

¹ Commissions, trailing commissions, management fees and expenses all may be associated with mutual fund investments. Please read the prospectus before investing. The indicated rates of return are the historical annual compounded total returns net of fees and expenses payable by the fund (except for figures of one year or less, which are simple total returns) including changes in security value and reinvestment of all dividends/distributions and do not take into account sales, redemption, distribution or optional charges or income taxes payable by any securityholder that would have reduced returns. Mutual funds are not guaranteed, their values change frequently, and past performance may not be repeated.

² The risk level of a fund has been determined in accordance with a standardized risk classification methodology in National Instrument 81-102, that is based on the fund's historical volatility as measured by the 10-year standard deviation of the fund's returns. Where a fund has offered securities to the public for less than 10 years, the standardized methodology requires that the standard deviation of a reference mutual fund or index that reasonably approximates the fund's standard deviation be used to determine the fund's risk rating. Please note that historical performance may not be indicative of future returns and a fund's historical volatility may not be indicative of future volatility.

³ Please refer to the fund's simplified prospectus for distribution information.

⁵ Portfolio allocations will fluctuate over the life of the mutual fund as the portfolio holdings and market value of each security changes. The portfolio manager(s) may change the portfolio allocations in some or all of the sectors.

The contents are not to be used or construed as investment advice or as an endorsement or recommendation of any entity of security discussed.

Certain statements contained in this communication are based in whole or in part on information provided by third parties and CI has taken reasonable steps to ensure their accuracy.

The rates of return are used only to illustrate the effects of the compound growth rate and are not intended to reflect future values or returns on investment in an investment fund.

The "Growth of \$10,000" chart shows the final value of a hypothetical \$10,000 investment in securities in this class of the fund as at the end of the investment period indicated and is not intended to reflect future values or returns on investment in such securities.

Management Expense Ratio ("MER") represents the trailing 12-month management expense ratio, which reflects the cost of running the fund, inclusive of applicable taxes including HST, GST and QST (excluding commissions and other portfolio transaction costs) as a percentage of daily average net asset value the period, including the fund's proportionate share of any underlying fund(s) expenses, if applicable. The MER is reported in each fund's Management Report of Fund Performance ("MRFP"). MRFPs can be found within the Documents tab on ci.com.

CI Investments® and the CI Investments design are registered trademarks of CI Investments Inc. "Trusted Partner in Wealth™" is a trademark of CI Investments Inc. ©CI Investments Inc. 2020. All rights reserved.

Published October 2020