

# Signature Short-Term Bond Fund

Class P CAD



AS AT SEPTEMBER 30, 2020

## FUND OVERVIEW

This fund invests primarily in debt securities of Canadian issuers maturing in five years or less and in short-term notes. It is currently expected that investments in foreign securities will generally be no more than 49% of the fund's assets.

## FUND DETAILS

Inception date	May 2017
Total net assets (\$CAD) As at 2020-09-30	\$53.8 million
NAVPS	\$9.9539
MER (%) As at 2020-03-31	0.19
Management fee (%)	Negotiable
Asset class	Short Term Bond
Currency	CAD
Minimum investment	\$500 initial / \$25 additional
Distribution frequency	Monthly
Last distribution	\$0.0200

## Risk rating<sup>2</sup>

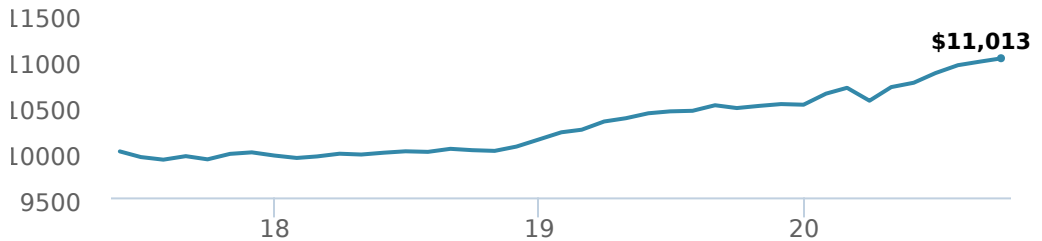


## FUND CODES

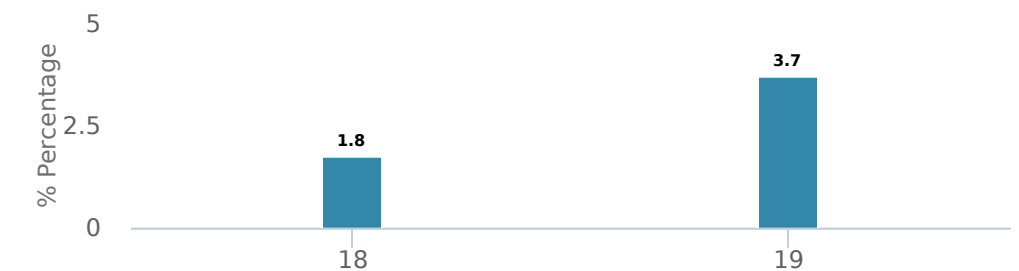
P	90180
A	ISC 7220 DSC 7225 LL 1225
E	16159
EF	15159
F	7226
I	7982
O	18159

## PERFORMANCE<sup>1</sup>

### Growth of \$10,000 (since inception date)



### Calendar year performance



### Average annual compound returns

YTD	1 Mo	3 Mo	6 Mo	1 Y	3 Y	5 Y	10 Y	Inception*
4.8%	0.3%	1.5%	4.4%	5.2%	3.6%	-	-	2.9%

\*Since inception date

## DISTRIBUTION HISTORY<sup>3</sup>

Payable date	Total	Payable date	Total
2020-09-25	0.0200	2020-04-24	0.0257
2020-08-28	0.0236	2020-03-20	0.0214
2020-07-24	0.0233	2020-02-21	0.0222
2020-06-26	0.0242	2020-01-24	0.0269
2020-05-22	0.0216	2019-12-13	0.0193

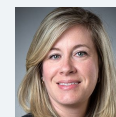
## CI PREFERRED PRICING<sup>4</sup>

Investment amount	Combined fee reduction
\$100,000 - \$500,000	0.05%
\$500,000 - \$1,000,000	0.06%
\$1,000,000 - \$2,500,000	0.12%
\$2,500,000 - \$5,000,000	0.17%
\$5,000,000 and above	0.24%

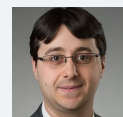
## MANAGEMENT TEAM



Signature Global Asset Management is among the largest portfolio management teams in Canada, managing a full range of global and Canadian income, equity and balanced mandates. Chief Investment Officer Eric Bushell was named Morningstar Fund Manager of the Decade in 2010. Signature Global Asset Management is a division of CI Investments Inc. Certain funds associated with Signature Global Asset Management are sub-advised by CI Global Investments Inc., a firm registered with the U.S. Securities and Exchange Commission and an affiliate of CI Investments Inc.



Leanne Ongaro



Paul Boreau

# Signature Short-Term Bond Fund

Class P CAD



AS AT SEPTEMBER 30, 2020

## PORTFOLIO ALLOCATIONS<sup>5</sup>

Asset allocation	(%)	Sector allocation	(%)	Geographic allocation	(%)
Canadian Corporate Bonds	54.47%	Fixed Income	90.98%	Canada	100.01%
Canadian Government Bonds	29.45%	Cash and Cash Equivalent	9.03%	Other	-0.01%
Cash and Equivalents	9.03%	Other	-0.01%		
Mortgages	4.54%				
Canadian Bonds - Other	2.52%				
Other	-0.01%				

## TOP HOLDINGS

	Sector	(%)
1. Quebec Province 3.50% 01-Dec-2022	Fixed Income	6.87%
2. Ontario Province 1.35% 08-Mar-2022	Fixed Income	6.24%
3. Alberta Province 2.35% 01-Jun-2025	Fixed Income	4.36%
4. Canada Housing Trust No 1 1.80% 15-Dec-2024	Fixed Income	2.86%
5. Ontario Province 2.30% 08-Sep-2024	Fixed Income	2.02%
6. Canada Government 1.50% 01-Sep-2024	Fixed Income	1.83%
7. Quebec Province 3.00% 01-Sep-2023	Fixed Income	1.73%
8. TD Capital Trust IV 6.63% 30-Jun-2021	Cash and Cash Equivalent	1.64%
9. General Motors Fncl Canada Ltd 3.25% 07-Nov-2023	Fixed Income	1.58%
10. Manulife Bank of Canada 2.84% 12-Jan-2023	Fixed Income	1.55%
11. Granite REIT Holdings LP 3.87% 30-Sep-2023	Fixed Income	1.54%
12. H&R REIT 3.42% 23-Dec-2022	Fixed Income	1.52%
13. Canadian Mortgage Pools 6.45% 01-Jan-2025	Fixed Income	1.52%
14. Fortified Trust 1.67% 24-Jul-2028	Fixed Income	1.49%
15. VW Credit Canada Inc 2.85% 26-Sep-2024	Fixed Income	1.47%

Note: This page is not complete without disclaimers on the next page.

Over 35,000 financial advisors have chosen CI Investments as a partner. We believe that Canadians have the best opportunity for investment success by using the services of a professional financial advisor. [Learn more at ci.com](https://www.ci.com).

<sup>1</sup> Commissions, trailing commissions, management fees and expenses all may be associated with mutual fund investments. Please read the prospectus before investing. The indicated rates of return are the historical annual compounded total returns net of fees and expenses payable by the fund (except for figures of one year or less, which are simple total returns) including changes in security value and reinvestment of all dividends/distributions and do not take into account sales, redemption, distribution or optional charges or income taxes payable by any securityholder that would have reduced returns. Mutual funds are not guaranteed, their values change frequently, and past performance may not be repeated.

<sup>2</sup> The risk level of a fund has been determined in accordance with a standardized risk classification methodology in National Instrument 81-102, that is based on the fund's historical volatility as measured by the 10-year standard deviation of the fund's returns. Where a fund has offered securities to the public for less than 10 years, the standardized methodology requires that the standard deviation of a reference mutual fund or index that reasonably approximates the fund's standard deviation be used to determine the fund's risk rating. Please note that historical performance may not be indicative of future returns and a fund's historical volatility may not be indicative of future volatility.

<sup>3</sup> Please refer to the fund's simplified prospectus for distribution information.

<sup>4</sup> CI Preferred Pricing fee reductions apply to management and administration fees and start at \$100,000.

<sup>5</sup> Portfolio allocations will fluctuate over the life of the mutual fund as the portfolio holdings and market value of each security changes. The portfolio manager(s) may change the portfolio allocations in some or all of the sectors.

The contents are not to be used or construed as investment advice or as an endorsement or recommendation of any entity of security discussed.

Certain statements contained in this communication are based in whole or in part on information provided by third parties and CI has taken reasonable steps to ensure their accuracy.

The rates of return are used only to illustrate the effects of the compound growth rate and are not intended to reflect future values or returns on investment in an investment fund.

The "Growth of \$10,000" chart shows the final value of a hypothetical \$10,000 investment in securities in this class of the fund as at the end of the investment period indicated and is not intended to reflect future values or returns on investment in such securities.

Management Expense Ratio ("MER") represents the trailing 12-month management expense ratio, which reflects the cost of running the fund, inclusive of applicable taxes including HST, GST and QST (excluding commissions and other portfolio transaction costs) as a percentage of daily average net asset value the period, including the fund's proportionate share of any underlying fund(s) expenses, if applicable. The MER is reported in each fund's Management Report of Fund Performance ("MRFP"). MRFPs can be found within the Documents tab on ci.com.

CI Investments® and the CI Investments design are registered trademarks of CI Investments Inc. "Trusted Partner in Wealth™" is a trademark of CI Investments Inc. ©CI Investments Inc. 2020. All rights reserved.

Published October 2020