

SunWise Elite CI PSS i70/e30 Portfolio

Guarantee Type Class A 100/100 CAD

Not available for distribution

FUND OVERVIEW

The Fund invests in multiple underlying funds that invest mostly in share and bonds of firms from around the world.

FUND DETAILS

Total net assets (\$CAD) As at 2020-09-30	\$4.1 million
NAVPS As at 2020-10-23	\$16.7717
MER (%) As at 2020-06-30	3.22
Management fee (%)	2.10
Asset class	Asset Allocation
Currency	CAD
Minimum investment	\$500 initial / \$50 additional

Risk rating²

Low	Low to moderate	Moderate	Moderate to high	High
-----	-----------------	----------	------------------	------

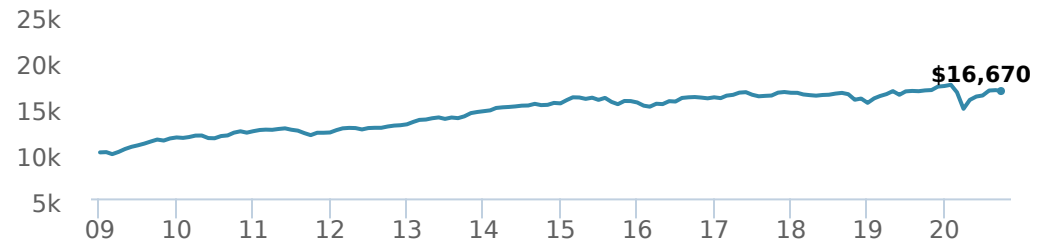
FUND CODES

Class A 100/100	ISC 9402 DSC 9902P
Class B 75/100	ISC 9422 DSC 9922P
Class C 75/75	ISC 9442 DSC 9942P

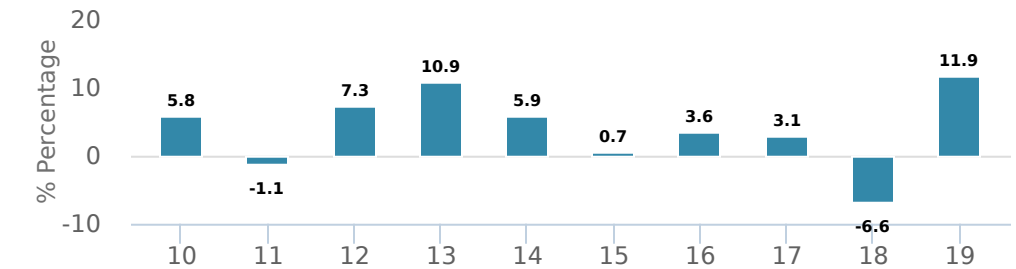
PERFORMANCE¹

As at 2020-09-30

Growth of \$10,000 (since inception date)



Calendar year performance



Average annual compound returns

YTD	1 Mo	3 Mo	6 Mo	1 Y	3 Y	5 Y	10 Y	Inception*
-3.2%	-0.6%	3.0%	13.1%	-0.4%	1.0%	1.8%	3.2%	4.4%

*Since inception date

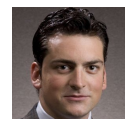
MANAGEMENT TEAM



CI Multi-Asset Management, led by portfolio manager Alfred Lam, oversees CI's managed solutions. The team's philosophy is centred on delivering predictable outcomes for investors by utilizing a full set of asset classes while adding value and managing risk through multiple factors. CI Multi Asset Management is a division of CI Investments Inc, a subsidiary of CI Financial Corp.



Alfred Lam



Marchello Holditch

SunWise Elite CI PSS i70/e30 Portfolio

Guarantee Type Class A 100/100 CAD

Not available for distribution



PORTFOLIO ALLOCATIONS⁵

As at 2020-09-30

Asset allocation	(%)	Sector allocation	(%)	Geographic allocation	(%)
Canadian Equity	17.35%	Fixed Income	44.22%	Canada	53.21%
Canadian Corporate Bonds	15.90%	Other	12.49%	United States	31.04%
US Equity	13.49%	Cash and Cash Equivalent	10.71%	Other	8.34%
Canadian Government Bonds	11.22%	Financial Services	7.95%	Japan	1.63%
Cash and Equivalents	10.71%	Exchange Traded Fund	5.59%	United Kingdom	1.32%
International Equity	9.23%	Technology	5.35%	France	1.14%
Foreign Corporate Bonds	8.78%	Industrial Services	4.16%	Cayman Islands	0.92%
Foreign Government Bonds	7.64%	Consumer Services	3.89%	Multi-National	0.89%
Other	3.48%	Basic Materials	3.17%	Netherlands	0.76%
Commodities	2.20%	Healthcare	2.47%	Australia	0.75%

TOP HOLDINGS

	Sector	(%)
1. Select Income Managed Corporate Class I	Mutual Fund	69.90%
2. Select Canadian Equity Managed Corporate Class I	Mutual Fund	12.00%
3. Select U.S. Equity Managed Corporate Class I	Mutual Fund	9.85%
4. Select International Equity Managed Corp CI I	Mutual Fund	7.94%

Note: This page is not complete without disclaimers on the next page.

Over 35,000 financial advisors have chosen CI Investments as a partner. We believe that Canadians have the best opportunity for investment success by using the services of a professional financial advisor. [Learn more at ci.com](https://www.ci.com).

¹ Commissions, trailing commissions, management fees and expenses all may be associated with mutual fund investments. Please read the prospectus before investing. The indicated rates of return are the historical annual compounded total returns net of fees and expenses payable by the fund (except for figures of one year or less, which are simple total returns) including changes in security value and reinvestment of all dividends/distributions and do not take into account sales, redemption, distribution or optional charges or income taxes payable by any securityholder that would have reduced returns. Mutual funds are not guaranteed, their values change frequently, and past performance may not be repeated.

² The risk level of a fund has been determined in accordance with a standardized risk classification methodology in National Instrument 81-102, that is based on the fund's historical volatility as measured by the 10-year standard deviation of the fund's returns. Where a fund has offered securities to the public for less than 10 years, the standardized methodology requires that the standard deviation of a reference mutual fund or index that reasonably approximates the fund's standard deviation be used to determine the fund's risk rating. Please note that historical performance may not be indicative of future returns and a fund's historical volatility may not be indicative of future volatility.

⁵ Portfolio allocations will fluctuate over the life of the mutual fund as the portfolio holdings and market value of each security changes. The portfolio manager(s) may change the portfolio allocations in some or all of the sectors.

The contents are not to be used or construed as investment advice or as an endorsement or recommendation of any entity of security discussed.

Certain statements contained in this communication are based in whole or in part on information provided by third parties and CI has taken reasonable steps to ensure their accuracy.

The rates of return are used only to illustrate the effects of the compound growth rate and are not intended to reflect future values or returns on investment in an investment fund.

The "Growth of \$10,000" chart shows the final value of a hypothetical \$10,000 investment in securities in this class of the fund as at the end of the investment period indicated and is not intended to reflect future values or returns on investment in such securities.

Management Expense Ratio ("MER") represents the trailing 12-month management expense ratio, which reflects the cost of running the fund, inclusive of applicable taxes including HST, GST and QST (excluding commissions and other portfolio transaction costs) as a percentage of daily average net asset value the period, including the fund's proportionate share of any underlying fund(s) expenses, if applicable. The MER is reported in each fund's Management Report of Fund Performance ("MRFP"). MRFPs can be found within the Documents tab on [ci.com](https://www.ci.com).

CI Investments® and the CI Investments design are registered trademarks of CI Investments Inc. "Trusted Partner in Wealth™" is a trademark of CI Investments Inc. ©CI Investments Inc. 2020. All rights reserved.

Published October 2020